

THE SELECT
ENTRY

BLOQ
creative
carpet tiles



ENTRY 913 SILVER



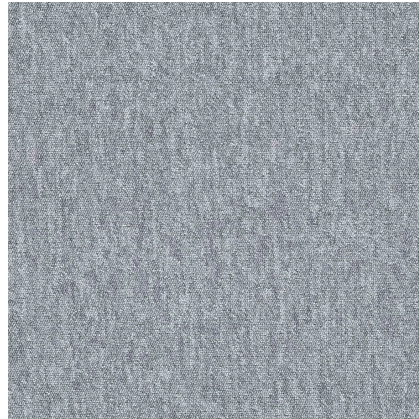
ENTRY 511 SKY



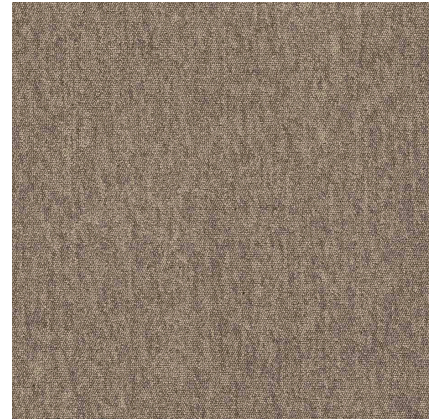
ENTRY 512 NAVY



ENTRY 914 FOG



ENTRY 913 SILVER



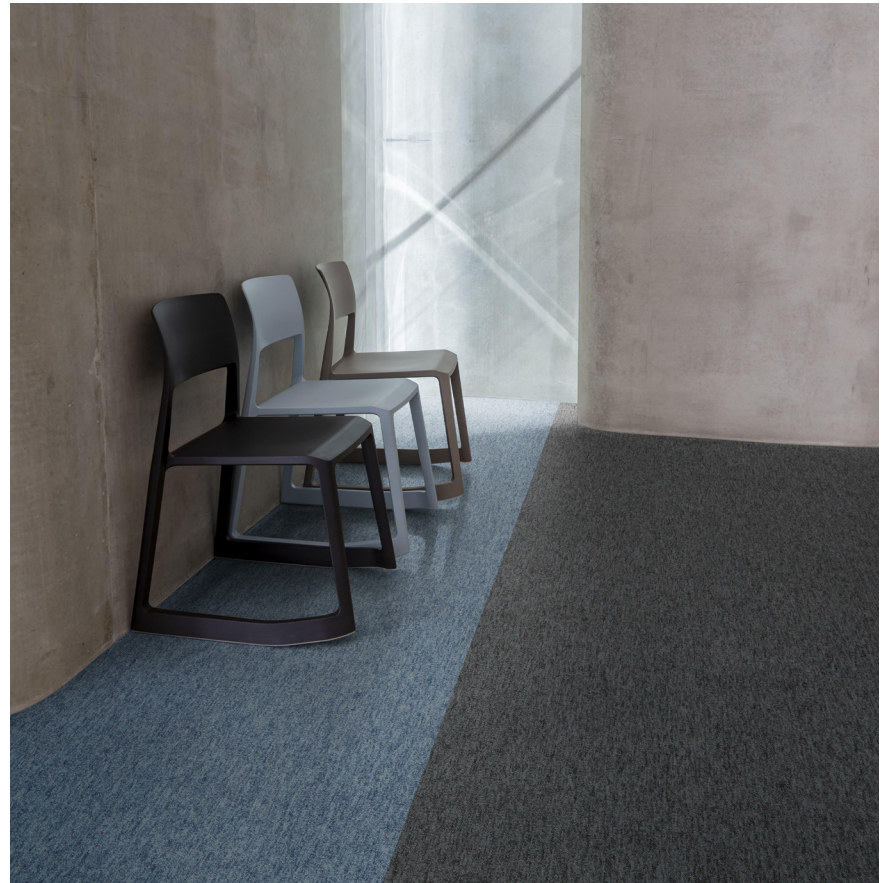
ENTRY 112 SAND



ENTRY 916 BASALT



ENTRY 917 ONYX



ENTRY 511 SKY & 914 FOG

BLOQ

creative
carpet tiles



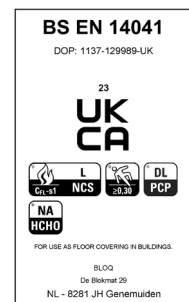
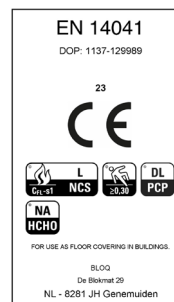
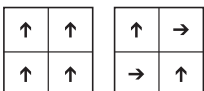
THE SELECT ENTRY

SPECIFICATIONS

| | |
|-------------------------------|----------------------------------|
| TYPE OF MANUFACTURE | Tufted Loop Pile 1/10" |
| | ISO 2424 |
| PILE FIBER COMPOSITION | 100% Polypropylene |
| | ISO 2424 Solution Dyed |
| SECONDARY BACKING | Bitback, Modified Bitumen |
| | ISO 2424 70% Recycled Content |
| DIMENSION | 50 x 50 cm |
| | EN ISO 24342 |
| PILE WEIGHT | 450 g/m ² |
| | ISO 8543 |
| SURFACE PILE WEIGHT | 285 g/m ² |
| | ISO 8543 |
| TOTAL WEIGHT | 4 100 g/m ² |
| | ISO 8543 |
| TOTAL THICKNESS | 5.6 mm |
| | ISO 1765 |
| PILE HEIGHT | 2.5 mm |
| | ISO 1766 |
| PILE DENSITY | 0.115 g/m ³ |
| | ISO 8543 |
| NUMBER OF TUFTS | 151 000 /m ² |
| | ISO 1763 |
| DIMENSIONAL STABILITY | ≤ 0.2% |
| | ISO 2551 |
| NUMBER OF COLOURS | 7 |
| PACKAGING | Box: 20 tiles / 5 m ² |
| | Pallet: 200 m ² |

PERFORMANCE

| | |
|---------------------------------|---|
| CLASSIFICATION | 31 |
| | EN 1307 |
| LUXURY RATING | LC1 |
| | EN 1307 |
| CASTOR CHAIR RATING | B: Occasional use |
| | EN 985 |
| FIRE CLASSIFICATION | C _{fl} -s1 |
| | EN 13501-1 |
| IMPACT SOUND INSULATION | ΔL _w : 23 dB |
| | EN ISO 10140-3 |
| SOUND ABSORPTION | Frequency Hz 125 250 500 1000 2000 4000 |
| | EN ISO 354 α _s 0.01 0.01 0.04 0.11 0.28 0.30 |
| NOISE REDUCTION | α _w : 0.10 |
| | EN ISO 354 |
| PERMANENT ANTISTATIC | ≤ 2 kV |
| | ISO 6356 |
| THERMAL RESISTANCE | 0.057 m ² K/W |
| | ISO 8302 |
| COLOUR FASTNESS TO LIGHT | ≥ 5-6 |
| | EN ISO 105-B02 |
| COLOUR FASTNESS TO WATER | ≥ 4-5 |
| | EN ISO 105-E01 |
| RUBBING FASTNESS | ≥ 4 |
| | EN ISO 105-X12 |
| GUT N° PRODIS | 05F76903 |



22/06/2023

All rights reserved to alter technical specifications.